

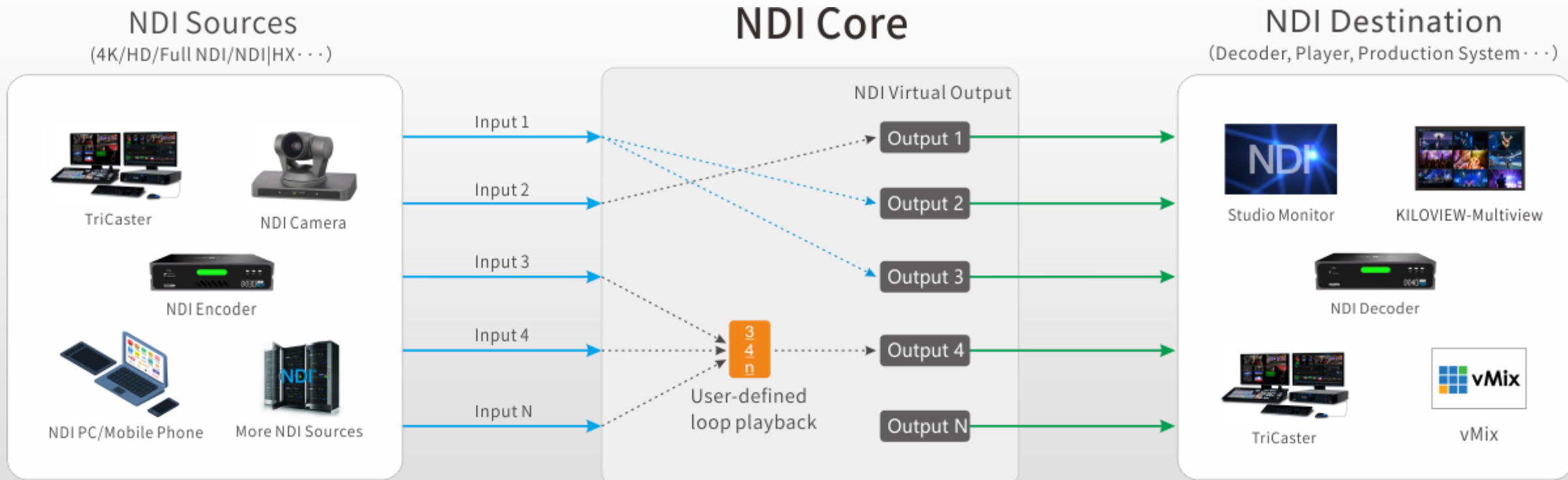
KILOVIEW Electronics CO., LTD.

Leading innovator and solution provider of IP-based transmission



NDI Core---NDI Managing and Switching System

NDI Core is a centralized system for your NDI sources to Control, Organize, Route and Everything, managing sources from dozens to thousands and building smooth and seamless switching channels for those sources. It supports various formats of NDI stream input and output, NDI signal copy and output, centralized management, and higher IP management ability. All make it suitable for such applications as Broadcast and TV program production, multi-channel NDI projection, multi-channel NDI conference.



Highlights



Centralized Management



NDI Signal Amplification



NDI Source Switching



High Compatibility



Loop Playback

NDI Core---NDI signal managing and switching system

Centralized Management

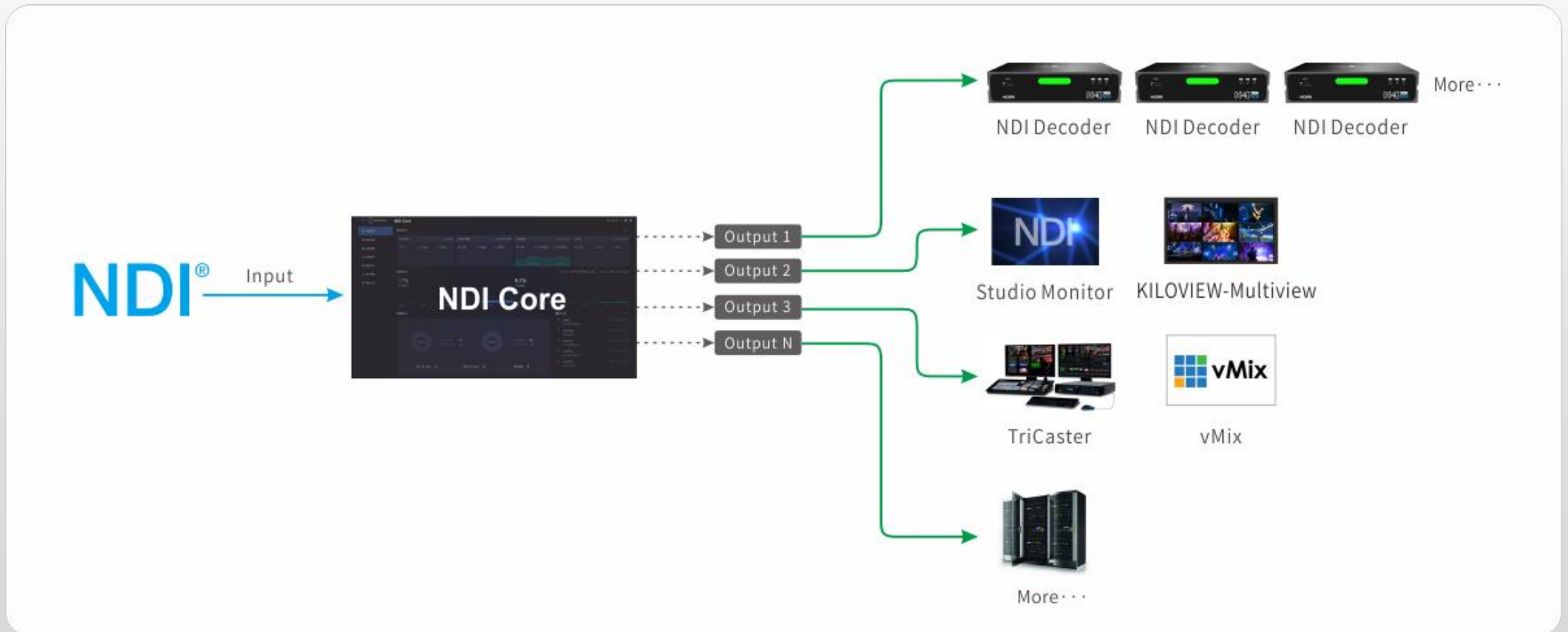
Automatically discovery and add the NDI devices in the local network.



NDI Core---NDI Managing and Switching System

NDI Signal Amplification

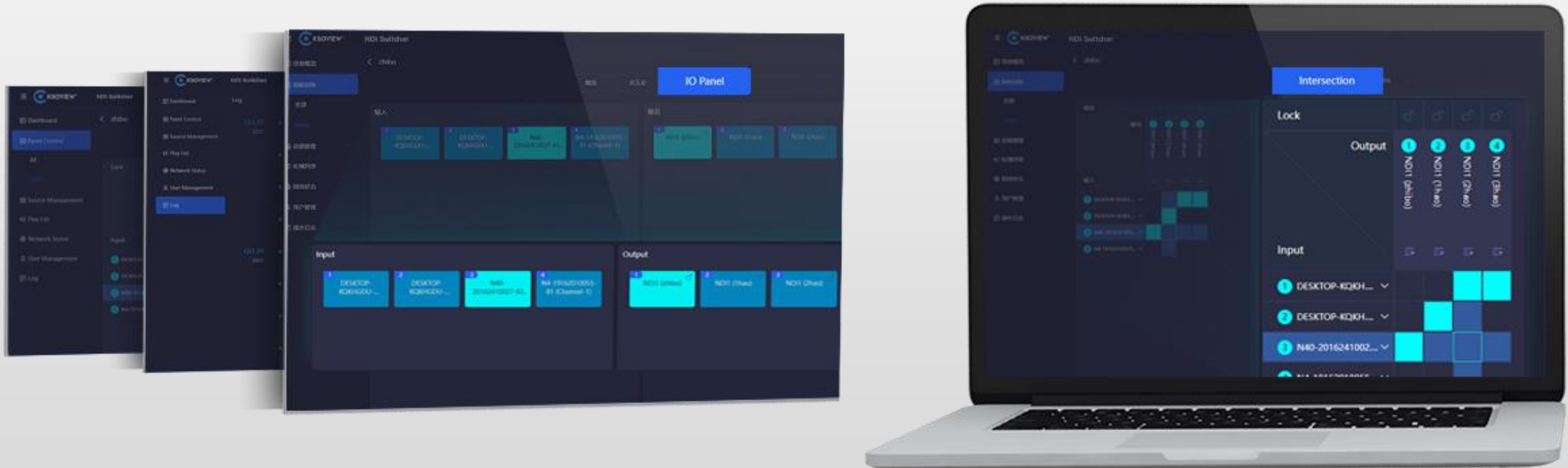
Copy and amplify the NDI signal
The signal amplification delay at the matrix end is ≤ 1 frame



NDI Core---NDI Managing and Switching System

NDI Signal Switching

Smooth and seamless switching
No frame synchronization device required



NDI Core---NDI Managing and Switching System

High Compatibility

Devise solutions: UHD or HD Full NDI and NDI|HX

Seamlessly connection: NDI conference cameras, NDI mobile phones/computers, NDI codecs, NDI production system, and other NDI-enabled system.

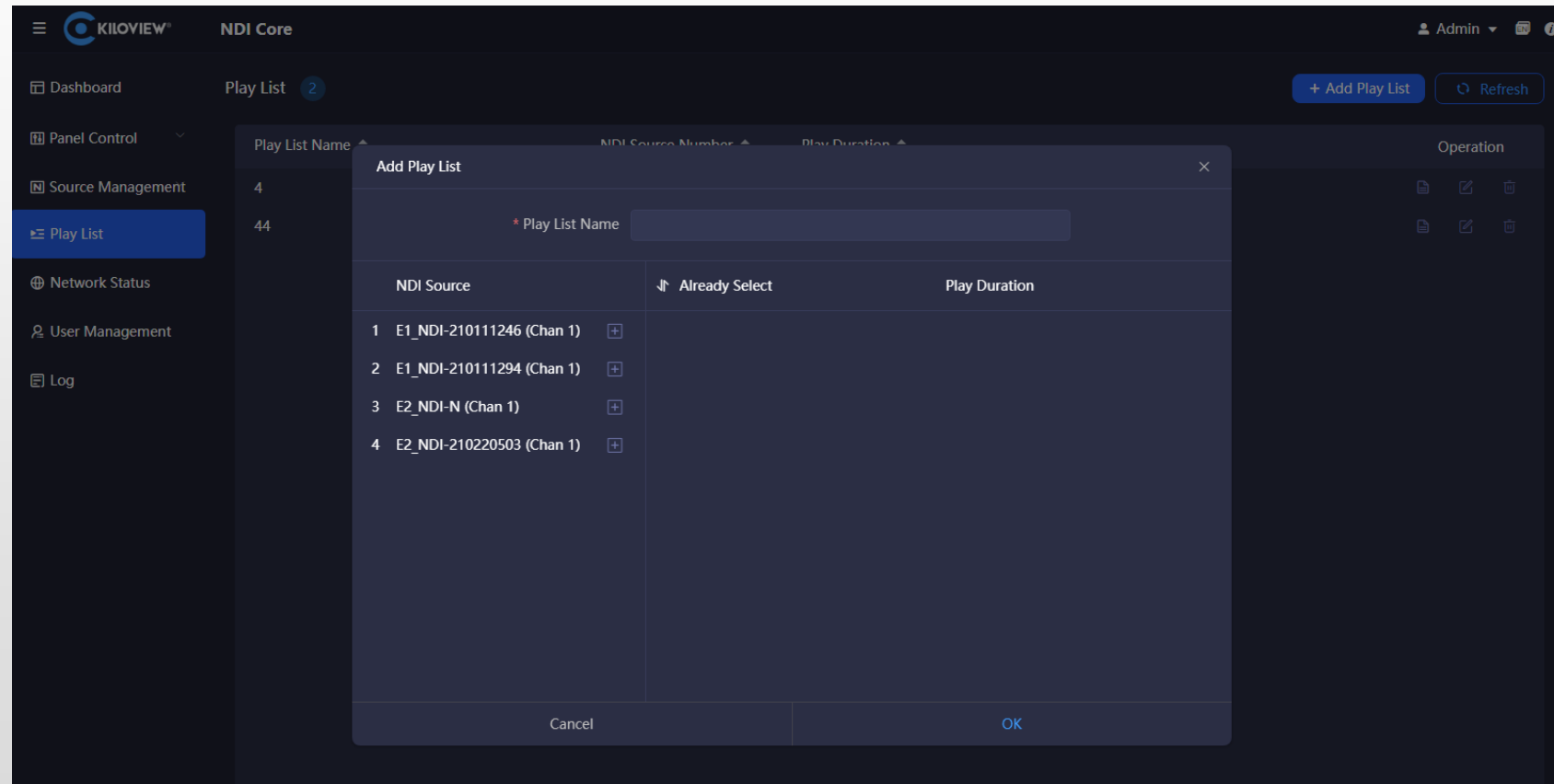


NDI Core---NDI Managing and Switching System

Loop Playback

NDI source single or loop playback.

Set the playback sequences, duration and auto switching of NDI sources.



NDI Core				
Types		Basic	Pro	Max (hardware version)
Free Trail		15-day free trial for limited 4 inputs and 4 outputs	15-day free trial for limited 4 inputs and 4 outputs	No
Max NDI Inputs	Kiloview/Ne wTek	Unlimited	Unlimited	Unlimited
	Others	16	Unlimited	Unlimited
Max NDI Outputs		16	Unlimited	Unlimited
NDI Output Connections		Unlimited (Depends on bandwidth)	Unlimited (Depends on bandwidth)	Unlimited (Depends on bandwidth)
Control Panel Types		Unlimited	Unlimited	Unlimited
Max Input/Output Resolution		4K P60	4K P60	4K P60
Input NDI Version		NDI/NDI HX	NDI/NDI HX	NDI/NDI HX
Output NDI Version		Same as input	Same as input	Same as input
Switch Panel Options		Crosspoint	IO panel and Crosspoint	IO panel and Crosspoint
PTZ/TALLY/METADATA Support		Yes	Yes	Yes
API		Yes	Yes	Yes
NDI Decoding		Yes	Yes	Yes
Auto Switching by Playlist		/	Yes	Yes
NDI Relay		Yes	Yes	Yes
Switching Delay		1 Frame	1 Frame	1 Frame
Role Management		/	Yes	Yes
Log Management		Yes	Yes	Yes
Server Requirement	OS	Linux (Windows supported, but not recommended)	Linux (Windows supported, but not recommended)	Linux (Windows supported, but not recommended)
	Deployment environment	Docker	Docker	Docker
	CPU	X86 / x86-64, not less than 4 cores, and the dominant frequency is not less than 1.5GHz	X86 / x86-64, not less than 4 cores, and the dominant frequency is not less than 1.5GHz	Intel i7-11700K, 8-core 16-thread, 3.6G dominant frequency
	RAM	Not less than 8GB	Not less than 16GB	32G dual channel DDR4 3200MHz
	Network	Gigabit Ethernet. The rate of single network card shall not be lower than 4Gbps or the total rate of multiple network cards shall not be lower than 4Gbps.	At least Gigabit Ethernet (10GbE recommended). The rate of single network card shall not be lower than 10Gbps or the total rate of multiple network cards shall not be lower than 10Gbps.	Intel 82599 chip PCI-E 10 Gigabit SFP+ x2 Gigabit adaptive electrical port x1
Service		Response on questions via email/message	Remote online guidance	Remote online guidance

NDI Core---NDI Managing and Switching System

Customization for hardware





Any In Any Out Anywhere



KILOVIEW Electronics Co., Ltd.

Tel: 86-731-88315979

E: info@kiloview.com

Support: support@kiloview.com

Add: B4-106/109, Jiahua Intelligence Valley Industrial Park, 877 Huijin Road, Yuhua District, Changsha, China

Please scan with browser.